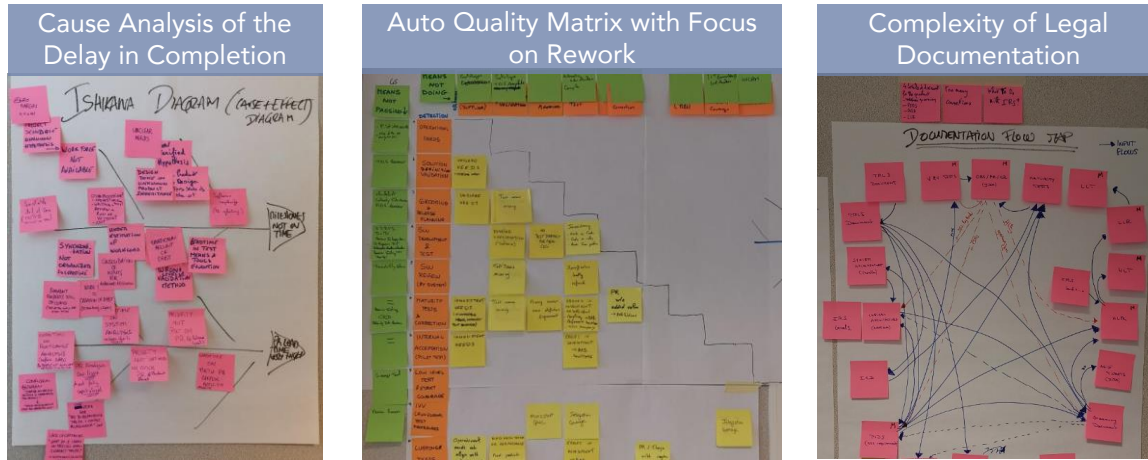


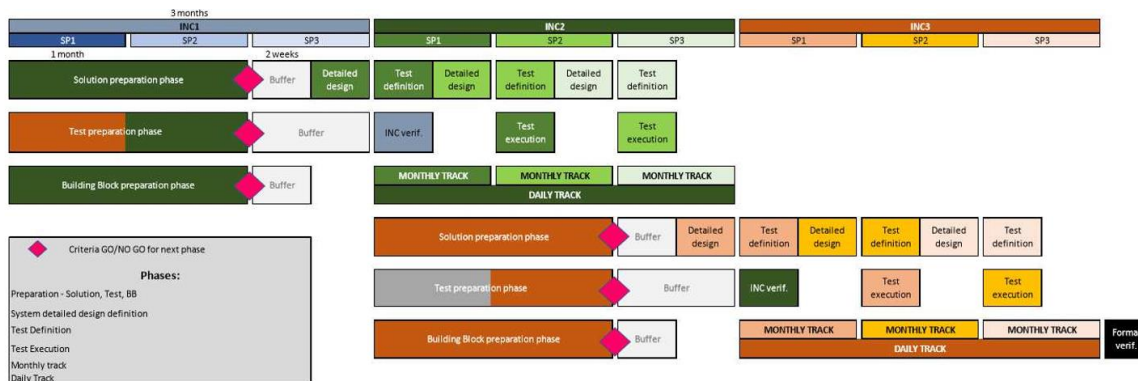
Lead Time Reduction in Product Development

PICTURES BEFORE



PICTURES AFTER

Project Management Model - with GO/NO GO Decisions, Buffers and Optimised Critical Path



Problem

- Most projects completed with delays
- High development costs

Root Causes

- Rework at advanced stages of development due to design problems
- High complexity and redundancy of the legal documentation process
- Communication failures between system teams (define the solution) and software (implement the solution)
- Tests carried out at an advanced stage of development, not allowing agile correction of bugs found

Solutions

- Parallel design/preparation phases, allowing co-engineering sessions: a multidisciplinary team that defines and implements the solution
- Go/No Go criteria ensure alignment between different project phases
- Synchronisation of all the teams involved, to ensure the follow-up of the process, with defined pacing
- Daily follow up of problems detected during testing and correction (continuous integration)

Benefits

